

iHealthcare

Healthcare

Healthcare delivery across the globe is undergoing drastic change. With the ever-growing needs of a business, the healthcare providers feel that the existing paper-based systems are just not efficient any more, either from the patient care or the financial perspective. It is, therefore, essential to transform healthcare delivery by leveraging information technology to improve the efficiency, accuracy, and effectiveness of the existing healthcare system.

Healthcare providers are faced with the problem of preparing their business to meet future challenges by keeping pace with technology, without losing their patients to competitors or compromising on the quality of services they provide to the patients.

A paradigm shift in thinking with respect to the IT needs of healthcare, and the need for automation of hospital processes, has brought in a lot of improvement in the conventional ways of operating or managing a hospital. The new generation healthcare service providers see IT as the backbone of their business with regard to data capture, information flow between various departments, management and patient satisfaction.

Healthcare Business Unit

The Healthcare Business Unit of Idhasoft develops solutions to cater to the IT needs of the healthcare service providers, so that they can focus on their core business rather than having to worry about the IT services. Idhasoft offers solutions developed using industry standard platforms from Microsoft, IBM and Oracle products and technologies.

Idhasoft caters to the end-to-end IT needs of a healthcare service provider, be it small, medium, large and chain of hospitals, small polyclinics, day-care units, chain of pharmacies, diagnostic centers, or blood banks. The solutions on offer are web-based, thereby offering users the flexibility of accessing the application from anywhere, using the internet.

Idhasoft has focused on using emerging computing technologies to help businesses operate more efficiently, and decided that the most cost-efficient way of facilitating its customers was cloud computing.

Clickaway Solutions on Cloud

Idhasoft implementation experts identified that one of the reasons that many healthcare providers shy away from implementing IT solutions for their business is the capital cost involved in setting up the hardware and the software, in addition to the recurring operating expenses for maintaining the staff to manage these resources. In view of such high costs, the healthcare providers would rather invest in medical infrastructure than in IT infrastructure. Understanding such concerns, Idhasoft has come up with Clickaway solutions to remove any obstacles that may hinder the players in the healthcare industry from adopting IT for their business processes.

Idhasoft offers Clickaway solutions on Cloud exclusively for the healthcare providers on Microsoft Windows Azure platform. Windows Azure is an Internet-scale cloud services platform that is hosted in Microsoft data centers. Windows Azure allows an enterprise to run an application and store data in Microsoft data centers, thus reducing hardware acquisition, management, and power costs for the enterprise.

What it can do for your business

Clickaway implementation on cloud is very simple. It is a technology that allows users to maintain data and applications over the Internet without the installation of software. The only things needed are a computer (or any other device), a browser, and an Internet connection. Such services require no maintenance from the user. Cloud computing simplifies the very concept of computing, right from the word Go.

*VISION - To be a
Global World Class
Organization that
provides Best-of-
Breed Localized
Business &
Technology
Solutions with
Continuous
Innovation &
Quality, delivered
by Best in Class
People*



iHealthcare

Listed below are the benefits offered by Clickaway on Cloud.

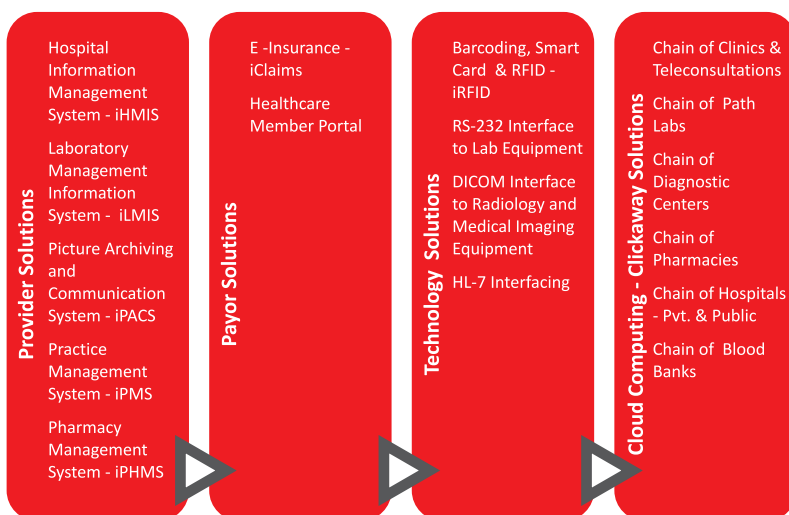
- Mobility - Access applications and data from anywhere at any time, using any device connected to the internet
- Eliminates the need to hire IT staff to manage the services
- Cost savings - Reduces need for advanced hardware and software licenses. Shift from capital expenses to operational expenses
- Easy maintenance, since the software need not be installed on every user's computer
- Pay only for what you use
- Improves the speed of performance of the application, even with peak load
- Agility - changes to the application can reach a customer faster
- Flexibility & Scalability – users can scale up or scale down their storage capacity in line with their changing infrastructure needs
- Faster implementation
- Quality of Service - Maximum uptime, without data loss during the transitions

Security and Privacy

Windows Azure employs the authentication and authorization techniques to ensure the security and privacy of a clients' data stored in the Microsoft data centers. Authentication makes use of user names and passwords, while authorization makes sure that users can access the data and applications, only if they are privileged to do so.

Solution Offerings

Idhasoft offers custom-made solutions of a varied nature to the healthcare service providers, under four different categories, as depicted below:



Salient Features

Our user-friendly web-based solutions are modular in nature, offering extreme flexibility. They conform to industry standards like HL-7, HIPAA, and DICOM, and support all international coding standards such as ICD 10, CPT, HCPCS, SNOMED, etc. The solutions can be integrated with any third party applications, as well as medical & non-medical equipment.

About Us

Having started its operations in Mumbai in 2006, today Idhasoft Limited has emerged as a global business leader in New Generation Consulting, with offices in 16 cities across four continents. On time cost-effective solutions have led us to consistently serve as many as 1,500 clients, across the globe. Idhasoft launched its Healthcare Business Unit with the acquiring of Altus Systems Pvt. Ltd., along with its customer base, across the world. Idhasoft launched its Healthcare Business Unit with the acquiring of Altus Systems Pvt. Ltd., along with its customer base, across the world. Altus Systems Pvt. Ltd, based in Hyderabad, India, was a software product development company, specialized in offering web-based healthcare IT products & services.

Our healthcare practice is professionally managed by domain experts who are ably supported by an experienced software development team. Idhasoft

has partnered with some of the best names in the industry, including Microsoft, IBM, Oracle and SAP to bring you the best solutions that can be offered.

iHealthcare

Benefits

- Enhanced patient satisfaction through efficient processes
- Enables faster retrieval of records
- Avoids duplication of efforts
- Enables better manpower utilization
- Offers better control over resources
- Reduces operation costs
- Achieves compliance with international standards with minimal effort

Our solutions are modular in nature to suit the end-to-end needs of an enterprise. The modules can be categorized into Clinical Services and Patient Management; Administrative & Business Functions; and Support Services.

Delivery Models

Our solutions come in two variations to suit the needs of the healthcare providers. The stakeholders can choose from a range of modules to suit their requirement.

Cloud Model

This solution is hosted on Microsoft Windows Azure platform. No investments, in terms of hardware and software, are required from your end. The greatest advantage of this model is that the software – applications and databases, and hardware – servers, of the business will be handled by qualified professionals. All the business needs is internet connectivity. At the click of a button, you are ready to use the application. It's as simple as that!

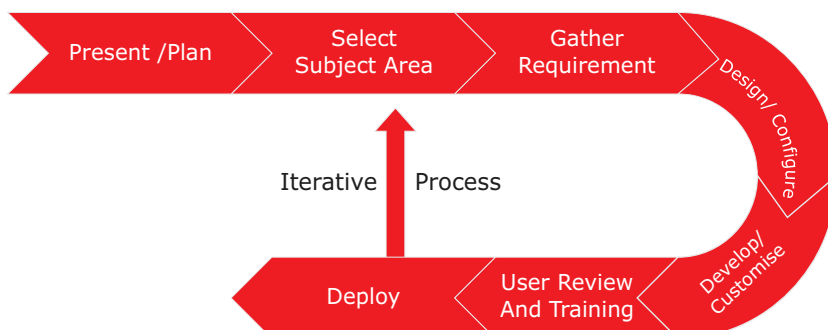
Buy-out Model

In this model, the stakeholder will have to procure and maintain the hardware and software. Idhasoft will implement the application at their premises using the Project Management Guidelines and Rapid Implementation Methodology.

Rapid Implementation Methodology

The implementation methodology of Idhasoft combines an understanding of the business functions, reporting and technology goals of the company, and working out the solution in manageable segments. Each of the modules is created with the above aim.

The following is the methodology flow:



Our Healthcare Solutions

iHMis[®]

iPMS[®]

iClaims[®]

iPACS[®]

iPMis[®]

iLMis[®]

For **FREE DEMO** Contact:

Satya Adari

Email: ihmis.sales@idhasoft.com

Tel: 91-40-6639 2900 Ext 955

Mob: 092461 89251



iHealthcare

While planning and selecting a subject area, the larger business and technological perspectives are given importance. No two organizations are the same. Each organization may require some subject areas but not the others. Identifying them at the earliest possible stage will save time and efforts. Once the subject areas are chosen, all the requirements for each area are gathered. These requirements are gathered from the end-users. The source of data is analyzed by studying technical resources.

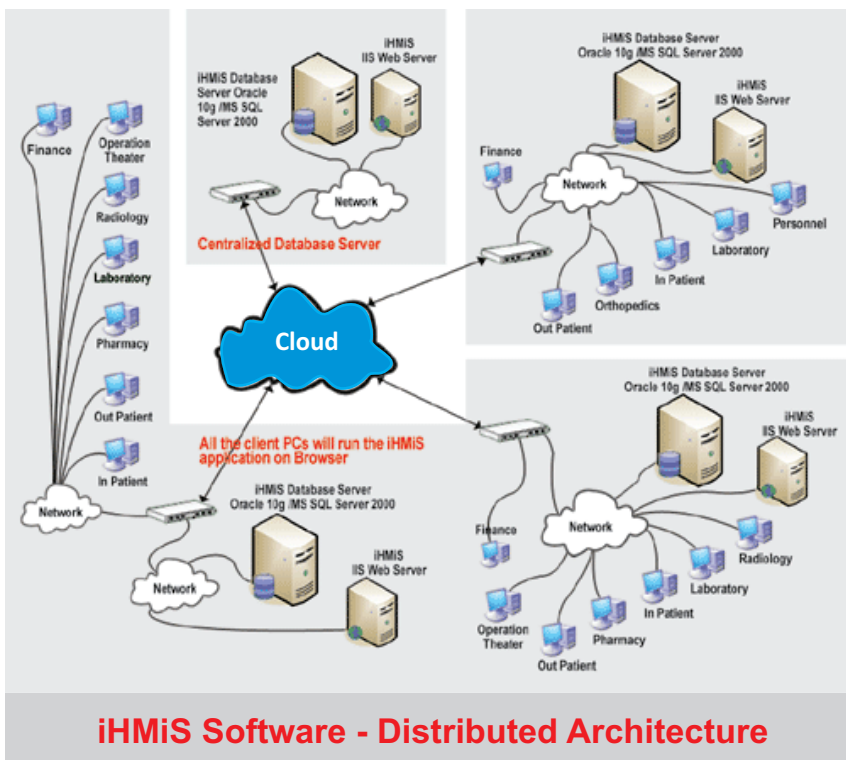
Business model prototypes are developed and test runs are conducted before the go-live stage. This will help map the user expectations with the actual solution. A review is obtained from the users in order to edit or modify the solution. Once the solution has been frozen, the end users are trained to use it. This finally leads to the deployment of the solution. Deployment is not the last stage of the solution life-cycle. Implementation of any solution is an iterative process that requires constant monitoring.

Support

Adequate training is provided to the end users as well the technical team in order to solve any problems that may arise after implementation. A first level escalation team within the customer organization will be deployed by Idhasoft to deal with any issue that may arise. Only on the occasion that no internal resolution is offered will the Idhasoft team come into play. This involves a contract signed by both the parties.

Technology & Architecture

Healthcare IT solutions from Idhasoft are Internet/ Intranet based systems, developed on the Microsoft web technology platform and all the popular databases such as MS SQL Server, mysql and DB2. The application is based on n-tier model, which means that you can implement it as an intranet system as well as a hosted system. The entire hosting functions on a very secure VPN mode; therefore the customer can see only his related application and database. The entire application is connected to a very high connectivity system. This model also facilitates easy integration with e-health systems



Our Partners

Idhasoft partners with the best names, in terms of technology to bring you solutions that enable you to run your business efficiently.



iHealthcare

iPMS - idha Practice Management System on cloud

iPMS, the Practice Management System, developed by us, is designed for small and medium sized clinics and polyclinics to enable them to smoothly deal with their day-to-day operations and increase productivity of the practice, besides providing patient satisfaction. **iPMS** addresses the complexities of the patient scheduling and monitoring it through a better workflow process, and mitigating errors.

The HIPAA and HL 7 compliant iPMS is multi-functional, and user-friendly. The ICD 9/10, CPT, HCPCS, SNOMED and NDC codes are pre-loaded into iPMS, enabling efficient analysis of claims and facilitating faster approvals. iPMS also maintains a list of insurance payers, sends out insurance claims, performs billing tasks, and generates reports for administrative and clinical purposes.

Since **iPMS** is a web-based solution, the practices need not worry about investing in expensive servers, security of the information and reliability of the application. **iPMS** automatically verifies a patient's eligibility to receive benefits from the insurance company using the internet. Our Quality & Compliance Team supports healthcare providers and practices to achieve compliance, working with CCHIT and similar standards organisations.

iPMS with rich, functional solutions can automate analytical processes, effectively share information, and can be easily configured to automate specific customer business processes.

In short, **iPMS** provides healthcare managers with a tool that encompasses all the financial, clinical, and operations elements of successfully running a practice.

iPMS, with user-friendly forms, includes the following features:

- ▶ Patient Registration
- ▶ Account Management
- ▶ Prescription
- ▶ Appointment & Scheduling
- ▶ User Code Sets
- ▶ ICD-CPT Multilinking
- ▶ CPT Charges List
- ▶ Insurance Coverage Update
- ▶ MPI Module
- ▶ Electronic Patient Records
- ▶ Physician Login
- ▶ Configuration Module
- ▶ Patient Encounter Summary
- ▶ General Code Sets
- ▶ Claims Entry & Submission
- ▶ Deposit Form

A sample list of reports that **iPMS** can generate is furnished below

- ▶ HCFA Report
- ▶ User Tracking Report
- ▶ Guarantor Quick Balance List
- ▶ Daily Activity Summary
- ▶ Claim Status Report
- ▶ Patient Statements
- ▶ Patient Aging
- ▶ Patient Day Sheet
- ▶ Facility Report

Cloud not only trims your IT costs, but also allows the application to be accessed from anywhere through the internet using a PC or a mobile device.

Make cloud work for you. Stay ahead of competition.

Call Us now at

91-40-6639 2900 x 955

91-9885473884

or visit:

www.idhasoft.com/healthcare

and we will show you how cloud can transform your business.

Corporate Office

B-407, BSEL Tech Park 5th Floor,
Sector 30A, Vashi, Navi Mumbai
400 705, India
Tel: +91-22-67232900

Development Centers

12-13-1274 1st Floor, Maspack
House, Tarnaka, Secunderabad
500 017 Andhra Pradesh, India
Tel: +91-40-66392900